



SALVAGE SOLUTIONS



a Boskalis company

WHAT CAN WE DO FOR YOU

'THE CORE OF OUR BUSINESS IS TO PROTECT YOUR INTEREST AND LIMIT EXPOSURE WHEN TIME IS YOUR WORST ENEMY.'

The core of our business is to protect your interest and limit exposure when time is your worst enemy. This is realized by providing the best possible and fastest solutions during marine incidents and categorized as follows:

EMERGENCY RESPONSE

- 24/7 response worldwide - Guaranteed.
- Fast response and optimal logistics from our 6 strategically located response centers.
- Qualified and experienced in-house salvage personnel in all required disciplines.
- State of the art salvage equipment readily available.
- Access to a large fleet of assisting vessels and local partners.
- Unparalleled track record of the most testing emergency response cases on a global scale.

WRECK REMOVAL

- Engineering and project management capabilities to handle the full spectrum during complex projects.
- Large in-house fleet of heavy lift equipment and other marine assets to provide best possible and most efficient salvage solutions.
- Track record of many complex wreck removals allowing to gain knowledge and experience meeting the latest available techniques and standard.

PREVENTION AND PREPAREDNESS

- Under OPA-90 (Oil Pollution Act) we provide emergency response services in the USA through Donjon-SMIT and are the provider of choice with over 50% market share.
- Through our global preparedness agreements we agree with you in advance on suitable contract principles upfront allowing to save valuable time when vessels are most vulnerable.

TRAINING AND EDUCATION

- The Managing Marine Emergencies (MME) course is offered to our clients and stakeholders providing training in all aspects of managing a marine emergency.
- In-house seminars are provided at your premises with programs tailored to specific topics relevant to your organization.
- We help your organization to further professionalize in managing marine incidents by participation in drills.

WHO WE ARE

We want to be your partner of choice in any marine incident. We promise to provide a fast response with innovative and sustainable solutions tailored to your needs.

PEOPLE AND ORGANIZATION

SMIT Salvage is synonymous with total commitment in the challenging field of sustainable marine emergency response and wreck removal. Whether it concerns a distressed Bulk carrier, Container vessel, Tanker, Offshore structure or otherwise, SMIT has the experience and in-house knowledge to deal with any type of vessel anywhere. This knowledge is based on the accumulation of experience since 1842, the year the company was founded. SMIT Salvage keeps its dedicated highly trained salvage professionals and specialized salvage equipment in a state of round-the-clock readiness to respond instantly to incidents anywhere in the world.

Over the years SMIT Salvage has also effectively realized a wide variety of demanding wreck removal projects. We have learned to manage complexity, mitigate risks and simplify execution to achieve optimal and reliable solutions.

You can rely upon the commitment of a wide range of specialists available globally as SMIT is part of Royal Boskalis, a leading global marine service provider.

Being part of this company allows us to run multiple and/or complicated projects simultaneously and provides in-house expertise in a wide range of marine disciplines.

ASSETS

From the same Boskalis group a large fleet of vessels can be engaged for any type of challenge such as (anchor handling) tugs, heavy lift vessels, semi-submersible vessels, diving vessels, construction support vessels and barges. Furthermore SMIT maintains an extensive network with vessel owners and local partners to ensure that we can always provide a prompt response.



'WE PROMISE TO PROVIDE A FAST RESPONSE WITH INNOVATIVE AND SUSTAINABLE SOLUTIONS TAILORED TO YOUR NEEDS.'

EMERGENCY RESPONSE

When you are confronted with an emergency, a prompt and effective response makes all the difference. We aim to provide assistance that meet your needs and expectations. SMIT Salvage's professional and experienced salvage teams and specialized equipment are ready to provide instant response to your emergency, anywhere in the world, no matter how remote the location. Since every salvage is unique our teams are selected for each specific situation and the following specializations are amongst our capabilities:

- Salvage masters
- Naval architects
- Marine chemists
- Firefighting experts
- Dive supervisors
- Rope access specialists

You can also count on our range of OPA-90 emergency response services. Our marine salvage, lightering and fire-fighting services ensure compliance with regulations for all vessels trading in the USA. For further information on these services, please go to www.donjon-smit.com our dedicated OPA-90 joint venture company Donjon-SMIT.

Operating out of six strategically located response centers in Rotterdam, Cape Town, Houston, Singapore, Rio de Janeiro and Gujarat supported by our extensive global network, we guarantee 24/7 response worldwide. At these (custom bonded) locations we have the following equipment dedicated for marine emergencies and instantly available to be mobilized anywhere in the world:

- Diving equipment
- Firefighting equipment
- Oil removal and containment equipment
- Pumping equipment
- Lifting and towing gear

'WE AIM TO PROVIDE ASSISTANCE THAT MEETS YOUR NEEDS AND EXPECTATIONS.'



Ever Given



Blue Star

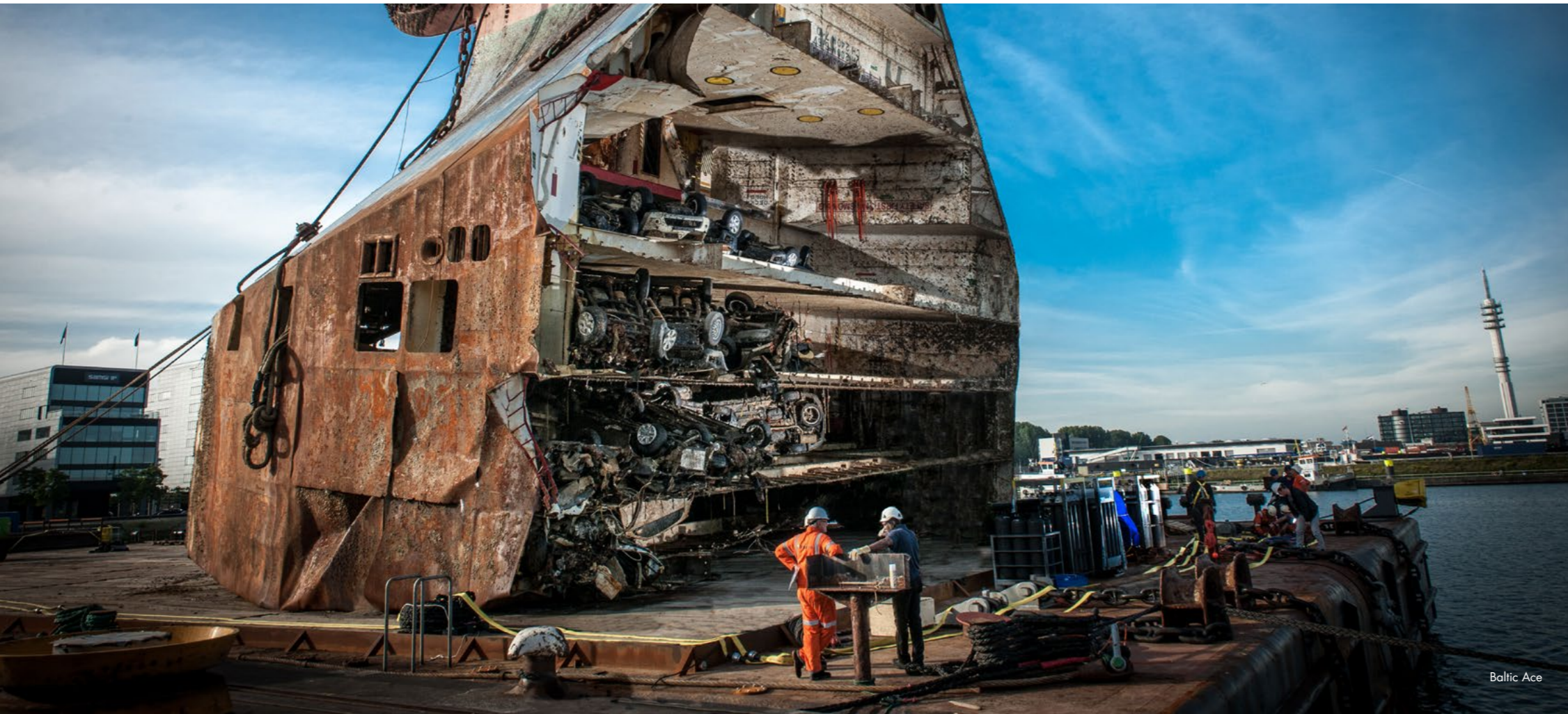


Maersk Honam



Modern Express

WRECK REMOVAL



Baltic Ace

'OUR IN-HOUSE SPECIALISTS DELIVER TURNKEY SOLUTIONS TO FIT ALL YOUR REQUIREMENTS.'

Removal of wrecks often originate from the need to ensure safe navigation, facilitate global trade and the environmental objective to keep our seas clean. SMIT provides the full range of required services to facilitate this and has demonstrated its capabilities in many challenging situations, such as but not limited to water depth, vessel type or condition, geographical location, political climate, regulatory environment, funding, client, etc.

These elements of complex wreck removals do not only require skills, experience and heavy assets, but particularly ingenuity, engineering capabilities and financial stamina to provide a total solution and certainty of cost to the client.

SMIT Salvage has the option of calling upon the expertise and resources of the entire Boskalis group having unparalleled in-house knowledge and assets available well positioning us to take up the most challenging projects.

This, combined with our unmatched ability to manage complexities, means that you can rely on us for an efficient turnkey solution that will fit all of your requirements, from feasibility studies and environmental impact surveys to execution and operational services. We commit to delivering the best possible result that is both cost-effective and sustainable to our client.

SMIT Salvage is constantly exploring new methods for wreck removal, pollutant and cargo recovery and technologies for advanced deep-water recovery work, in order to mitigate environmental threats wherever possible.



JBB De Rong 19



FSO Safer

SAFE AND SUSTAINABLE

SUSTAINABILITY

Preventing or minimizing environmental harm has always been part of our salvage solutions and we take pride in our commitment to the UN Sustainable Development Goals.

We recognize the importance to adhere to these goals as the world oceans are vital to our existence and preservation for future generations is key. Therefore, in all aspects of our operation we aim to save assets in peril and minimize environmental harm.

We have a wide variety of specialized equipped, in-house marine biologists and ecological specialists that can support if needed.

Applying this knowledge and capabilities can have a substantial impact to achieve our goal, cleaner seas and preventing reputational damage for the vessel owner. We manage the increasingly complex stakeholder field and have extensive experience in cooperating with local authorities and other parties in accordance with their expectations.

To have sustainability measures implemented that are beyond our direct influence we participate in industry work groups with the aim to introduce the right incentives in contracts and legislation to make it attractive and/or mandatory to act in a sustainable manner for all stakeholders.

SAFETY AND QUALITY

All our operations are executed taking into consideration the latest industry standards and engagement of well trained personnel by using the best available technological equipment. Our in-house developed safety program is focused on behavioral based safety providing training to our staff to think and act safely in all phases of the operation. To ensure high quality and safe operations, the following measures are implemented:

- Using the best technology and following the latest industry standards.
- Project preparations, control and delivery governed by our Boskalis group Quality Management System.
- Preparation and execution in accordance with our (group) QMS (Quality Management System).
- Our staff is qualified for the operations where behavioral safety is integral part of the trainings provided.

'DURING ALL OUR OPERATIONS PROTECTION OF HUMAN AND MARINE LIFE TAKES THE HIGHEST PRIORITY.'



A TEAM BUILT AROUND YOUR NEEDS



FSO Safer



Zafiro Producer



Rumailah

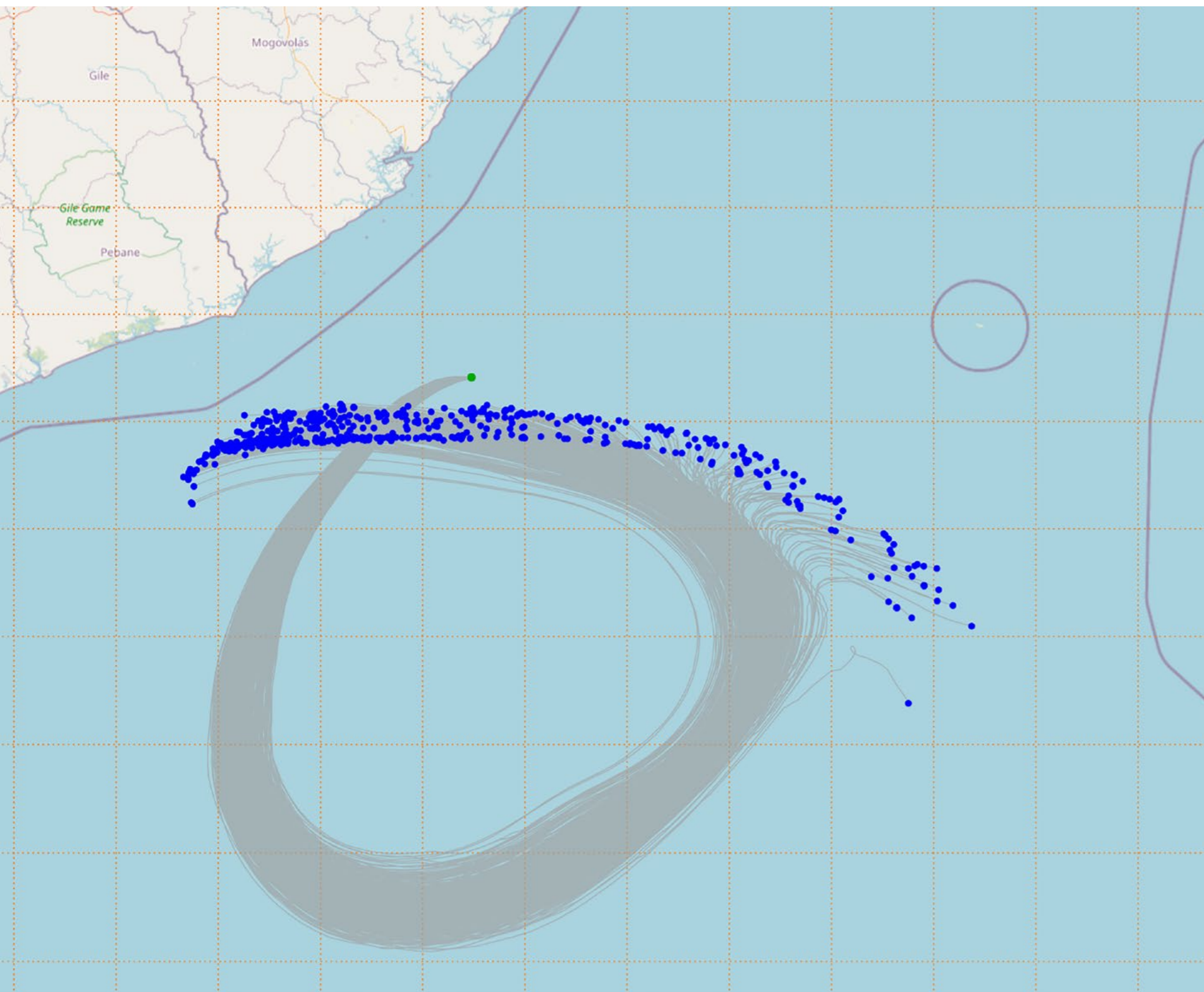
'IT IS IN OUR NATURE TO BUILD A TEAM AROUND THE CHALLENGES YOU FACE AND DELIVER UNIQUE SOLUTIONS.'

In addition to our skilled salvage professionals, you can also rely on in-house Baskalis specialists having expertise in a wide range of disciplines to forming a dedicated team around your needs. These disciplines include:

- Marine engineering
- Naval architecture
- Environmental specialists
- Marine biology and reef expertise
- Civil engineering
- Explosive ordnance disposal (EOD)
- Heavy lifting engineering
- Marine transport engineering
- Stakeholder management
- Geology

Thanks to the Baskalis fleet of vessels and our towage partners we have prominent presence on all continents, in more than 27 ports in 36 countries.

The combined fleet of the group consist of over 500 vessels and floating equipment. By having these disciplines and assets in-house and globally available we are well positioned to timely and accurately react to your emergency situation.

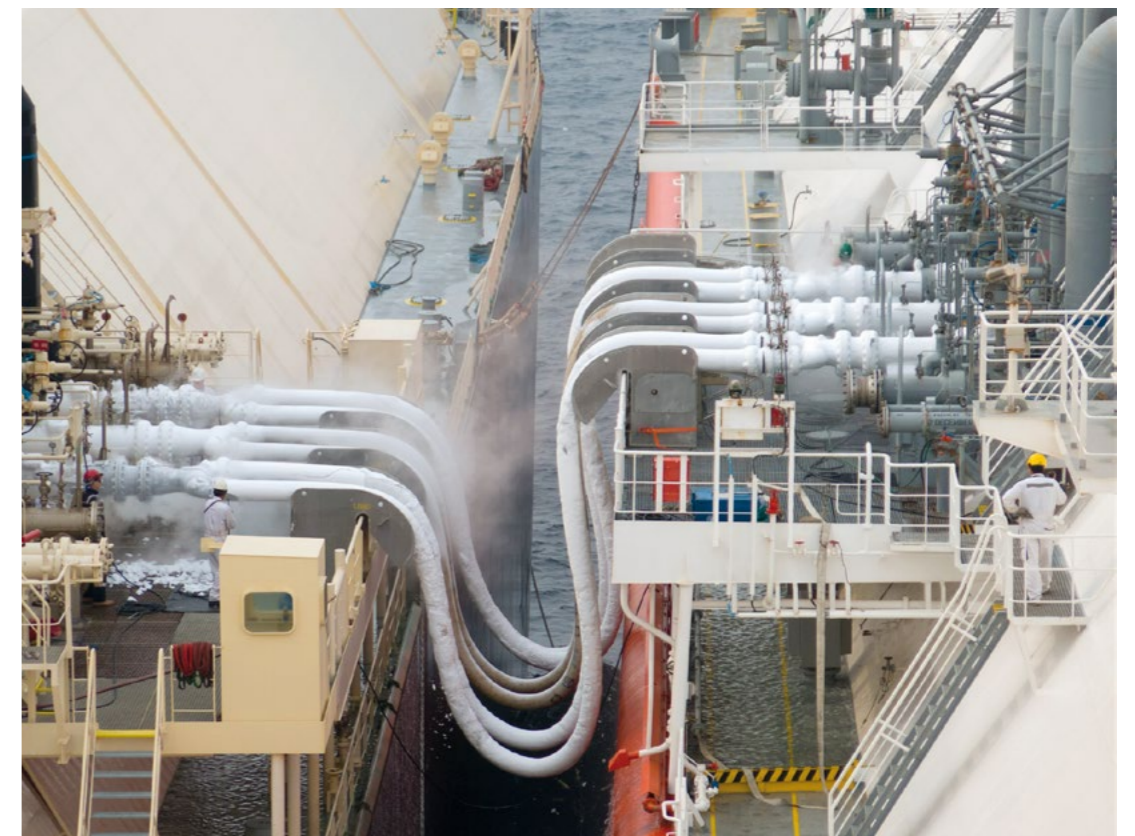


INNOVATION AND NEW TECHNOLOGIES

The maritime world keeps developing and new technologies are being implemented. Further, there is a steady trend that vessels grow larger. This requires SMIT to adapt and stay the market leader being capable of providing the latest knowledge and technology in salvage operations.

SMIT actively liaises with partners in the maritime industry to develop reliable salvage methods adapting with new technologies. The latest focal areas are:

- Hazardous cargo
- Alternative fuel / electric propulsion
- New firefighting techniques
- Renewables
- Lightering of large container vessels
- LNG ship to ship transfer



PREPAREDNESS AND PREVENTION

SMIT offers specifically designed Preparedness and Prevention Services for a diverse range of ships – from ice-classed vessels sailing in the Baltic to ultra-large crude carriers sailing around the Cape and from LNG carriers conducting ship-to-ship transfers to oil tankers and mega containerships. There are many benefits connected to these tailor-made services and we have worked with many renowned shipowners for decades on this basis. The Preparedness & Prevention Service contracts guarantee a 24/7 response if ships get into difficulty – SMIT can be anywhere in the world within 24 hours from its six strategic Emergency Response Centers in Rotterdam, Cape Town, Houston, Singapore, Rio de Janeiro and Gujarat.

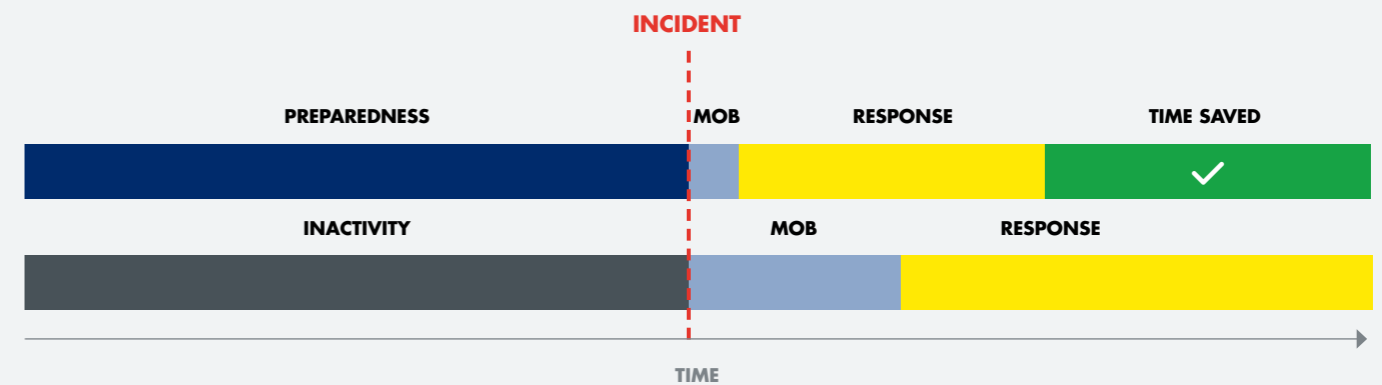
With a pre-agreed Preparedness and Prevention Service contract shipowners know the Terms & Conditions and tariffs beforehand in case things go wrong. There's no need to negotiate with unknown tug owners in the midst of an emergency – there's clarity and certainty upfront, so you can fully rely on SMIT Salvage. We always do what is best for our client and work together to achieve a safe, sustainable and timely solution.

In any marine emergency, speed and good organization are key. This is why our clients have a single point of contact for assistance. We understand that immediate action leads to reduced losses and can often prevent a relatively small event from turning into a major disaster. These contracts are invaluable in safeguarding an immediate response, even if the scale of an incident is not known in the first instance. SMIT prides itself in working with our client to assess the situation and best suited response, which is based on the expertise and experience of our experts.



'SAVE VALUABLE TIME AND MITIGATE POTENTIAL LOSSES BY USING OUR PREPAREDNESS AND PREVENTION CONTRACTS.'

VALUABLE TIME IS SAVED BY ALIGNMENT PRIOR AN INCIDENT



MANAGING MARINE EMERGENCIES COURSE

Sharing knowledge is in the core of everything that we do at SMIT. Working together with our clients and other parties involved is a must to minimize any exposure during salvage projects. Sharing our expertise and learning from our clients is embedded in our four-day Managing Marine Emergencies (MME) Course. For over 30 years we open our doors twice a year and provide a unique chance to meet the salvage experts – the people that have really been at the sharp end in averting maritime disasters. It is designed to identify and assess those vital ‘first response’ actions needed to safeguard crew, ship, cargo, the environment and the reputation of your company in a marine emergency situation. Special attention is devoted to the fundamentals of crisis management and teamwork, including contracting, insurance, legal matters, dealing with the media, fast decision-making, setting priorities and liaising efficiently between the parties involved. In short, the aim is to demonstrate how to prevent a crisis turning into a catastrophe.

Besides the training the course provides a wonderful chance to build your international professional network. You bond and work closely as a team during the day, and then interesting events, excellent dinners and boat tours are organized for the evening for those wishing to participate. This gives people a chance to absorb all the information and exchange ideas.

WHO SHOULD ATTEND

SMIT’s MME Course is suitable for a broad range of maritime related professionals and regularly attracts ships’ officers and shore-based management staff. But the course is also valuable to Classification Societies, Marine Insurers, P&I Club Managers, Port Authorities and Coast Guard personnel amongst others. The MME Course takes place twice a year at the SMIT headquarters in Papendrecht, the Netherlands. For the participants, SMIT Salvage has selected a four-star hotel in the vicinity of our offices. The dates for next MME course and information about subscription can be found at our website www.smit.com.





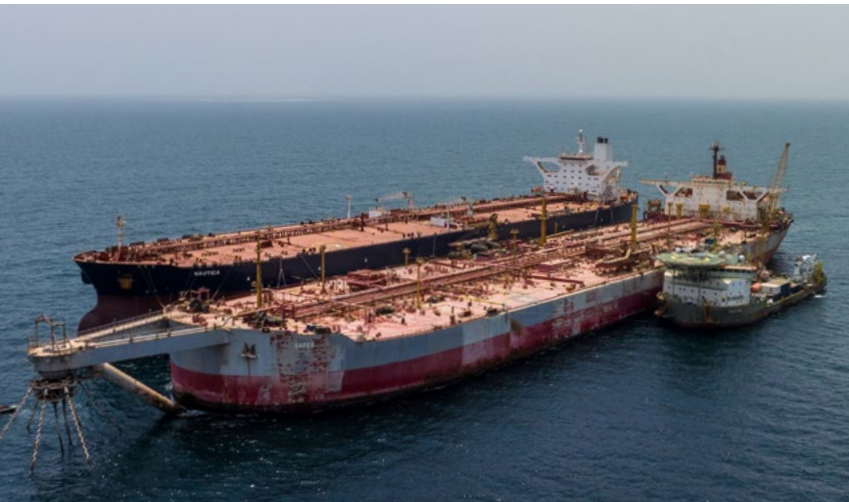
SMIT provides emergency response, salvage, wreck removal and environmental care services across the globe at a moment's notice. We respond 24/7 from our six strategic Emergency Response centers in Rotterdam, Cape Town, Houston, Singapore, Rio de Janeiro and Gujarat. www.smit.com

Visitor's address

Rosmolenweg 20
3350 AA Papendrecht
The Netherlands

SMIT response center 24/7

+31 10 454 99 11
salvage@smit.com
www.smit.com/contact



a Boskalis company